



100%
PASS RATE
IN 2016

**INTERNATIONAL
BACCALAUREATE
DIPLOMA GUIDE
2016 – 2017**

**RECENT IB RESULTS
UNIVERSITY DESTINATIONS
CHOOSING YOUR SUBJECTS**



St. Clare's, Oxford
— An International Education —

INTRODUCTION FROM THE PRINCIPAL

Our IB Guide is designed to give you detailed information about our examination results and university destinations as well as descriptions of the different subjects which you can study at St. Clare's through the International Baccalaureate Diploma or through the Pre IB programme.

2016 was another busy and successful year. The results of the students who took the IB examinations in May were excellent. 100% of our students passed the Diploma (in contrast to the worldwide pass rate of 80%) and the average score was the third highest in the College's history.

These results are not only a credit to the students themselves but also to the teaching and other staff who support their learning. We also need to appreciate that St. Clare's achieves these results from a student body where the majority of students do not speak English as their first language, where many of them have never lived in a boarding school before or lived away from home. The College's academic success is also, therefore, very much the result of the way that students are integrated into and supported by our community.

We have now moved into our beautiful new residence at 121 Banbury Road. The buildings are centred around a quadrangle, very much in the style of an Oxford college.

Double ensuite study bedrooms are provided for male and female students in separate houses. There is also an impressive art studio which looks out upon the central garden. These wonderful new buildings manage to complement the historic house which is at the centre of the development.

St. Clare's is a college which provides a very high standard of education and care to its students while continually striving to enhance the quality of their experience. The Diploma provides a real education through an integrated programme which both engages and challenges young people at all stages of their intellectual and personal development.

Being part of the St. Clare's community is a real pleasure. I hope that you will find this Guide interesting and that it will stimulate questions about St. Clare's and encourage you to find out more about us and, of course, pay us a visit. We are proud of the work we do here and would welcome the opportunity to share our enthusiasm with you.

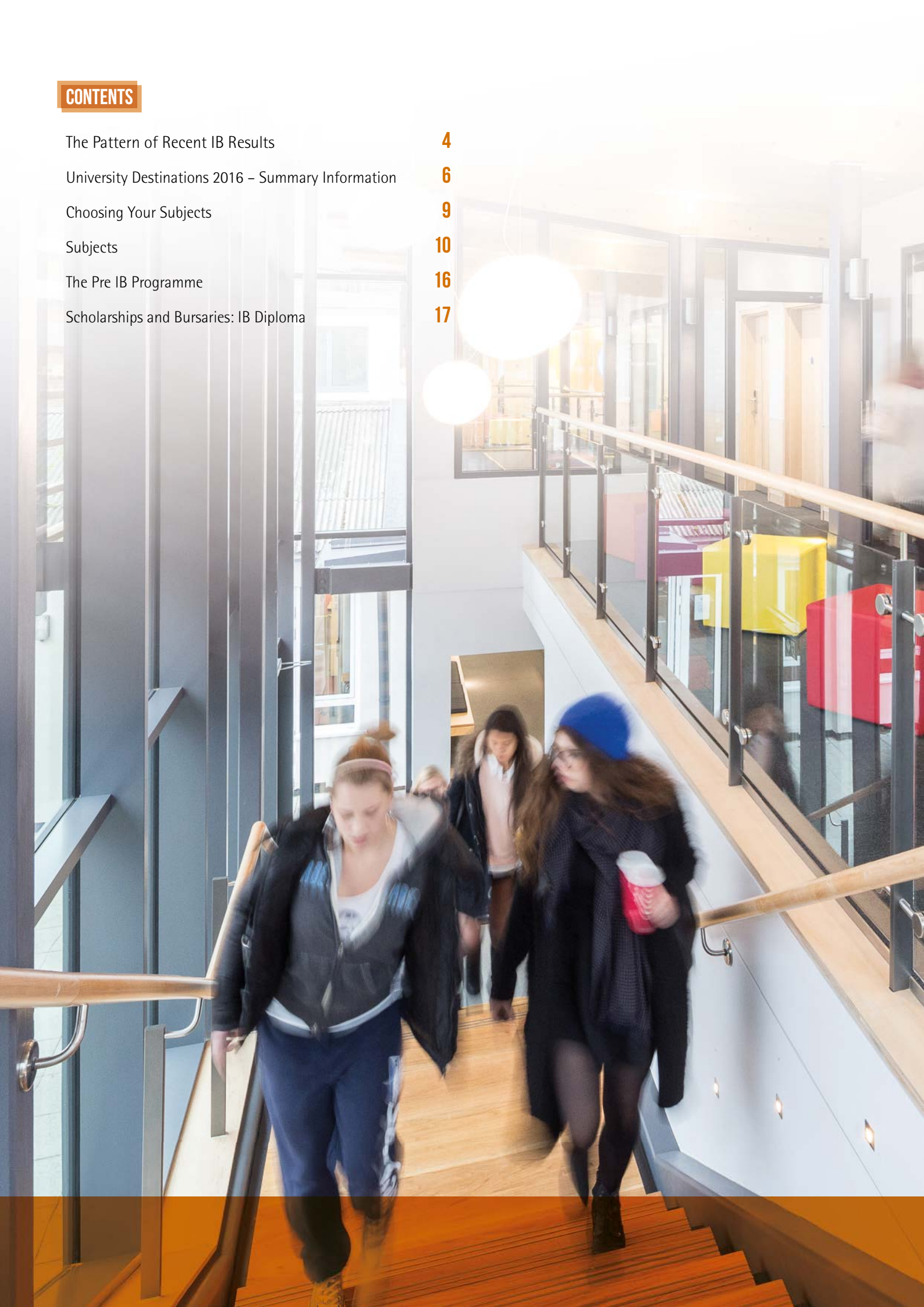
With my best wishes.

Andrew Rattue
Principal



CONTENTS

The Pattern of Recent IB Results	4
University Destinations 2016 – Summary Information	6
Choosing Your Subjects	9
Subjects	10
The Pre IB Programme	16
Scholarships and Bursaries: IB Diploma	17



2016 IB DIPLOMA RESULTS

St. Clare's is pleased to announce an outstanding set of results in the May 2016 exams. The class of 2016 have achieved the third highest average IB points score in the history of the College. This reflects the outstanding work of students and staff together.

WE ACHIEVED:

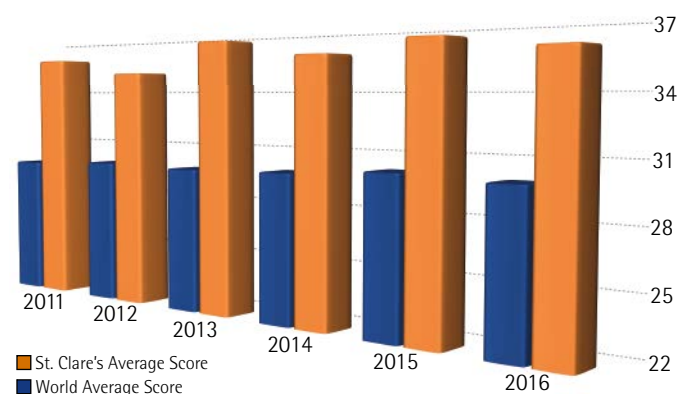
- » An average points score of **36**; this compares very favourably to the world average of 30.
- » A **100% pass rate**; the world pass rate is 80%.
- » **65%** of students with **35 points** or more (considered equivalent to 4.5 grade As at A level).
- » Roughly a **quarter** of students gaining the elite category of **40+ points** (top 5% in the world).
- » **29%** of Maths Studies students & **22%** of Maths SL candidates scored a **7**, against a world average of 8%.
- » **95%** of English B candidates scored a **6** or **7**.
- » 7 subjects had average scores of **1.5 or more** higher than the world average.

COMPARISON OF ST. CLARE'S 2016 RESULTS WITH PREVIOUS YEARS

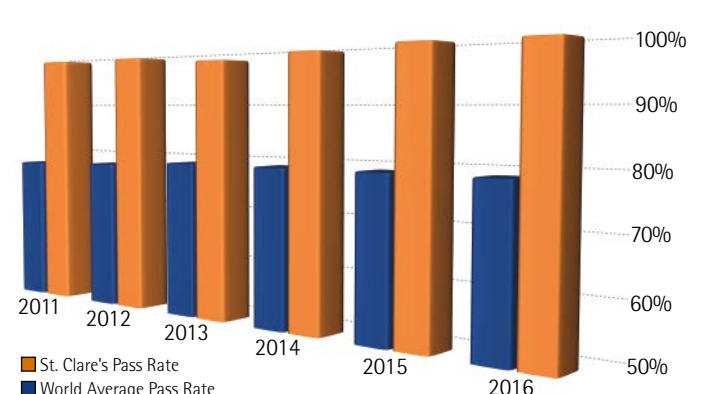
	2011	2012	2013	2014	2015	2016
Students with 40 points or more	24%	22%	31%	25%	26%	24%
Students with 30 points or more	91%	90%	92%	87%	98%	93%
Students with 24 points or more	100%	99%	99%	100%	100%	100%
Mean score	36	35	37	36	37	36

The maximum score is 45 points and the pass mark is 24 points.

St. Clare's IB Diploma average points scores have consistently outperformed world averages:



St. Clare's IB Diploma pass rates have consistently outperformed world pass rates:



IB HIGHLIGHTS OVER THE PAST FEW YEARS

2013

WE ACHIEVED AN AVERAGE POINTS SCORE OF 37, SO UNSURPRISINGLY, THE VAST MAJORITY OF OUR SUBJECTS EXCEEDED THE WORLD AVERAGE BY A CONSIDERABLE MARGIN:

- In English Literature Higher Level the average was 5.88, compared to 4.77
- In Chemistry Higher Level the average was 6.00 compared to 4.55
- In Biology Higher Level the average was 6.28 compared to 4.34
- In Spanish Language Standard Level the average was 6.67 compared to 5.01
- In History Higher Level the average was 5.75 compared to 4.75
- In Maths Standard Level the average was 5.78 compared to 4.46.

2014

FOR THE TENTH YEAR RUNNING, WE HAD STUDENTS GAINING 45 POINTS (STATISTICALLY WE SHOULD HAVE ONE EVERY FIVE YEARS):

- In 44 subjects, our students scored higher than the world average
- In Chemistry SL, the average score was more than 2 points above the world average
- In Biology at both HL & SL, it was just under 1.5 better
- In Business & Management, the average score was 6.05 as opposed to a world average of 4.65
- In Maths HL, it was 5.61 as opposed to 4.41.

WE HAD 100% PASS RATE, TWO STUDENTS SCORING 45 POINTS AND THE SECOND HIGHEST AVERAGE IN ST. CLARE'S HISTORY:

- In 48 out of 56 subjects, our students scored higher than the world average
- Out of the 630 subject exams sat, only 3 were graded at 3. None was graded lower
- The average grade in English Literature was 6.14, as opposed to a world average of 4.74
- The average grade for Environmental Systems was 1.73 above the world average
- Biology & Chemistry at both HL & SL were very significantly above world averages.

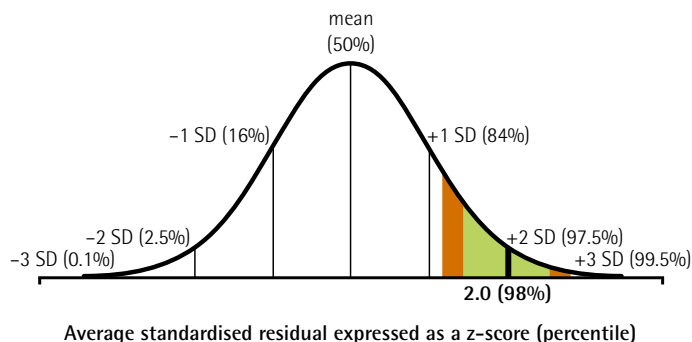
2015

HOW MUCH VALUE DO WE ADD FOR OUR STUDENTS?

The graph below is based on an ALIS analysis (Advanced Level Information System) carried out by Durham University. This is the standard measure of added value for IB & A Level schools in the UK, the one that government inspectors use to measure student progress.

It compares the progress made by students during their two years at St. Clare's to the progress made by students in other schools and colleges.

The graph shows that student achievement at St. Clare's is in the top 2% of all the schools measured by Durham.



UNIVERSITY DESTINATIONS 2016 – SUMMARY INFORMATION

The vast majority of St. Clare's graduates go to university as the next step in their career. Institutions all over the world welcome our students and during their two years at St. Clare's, they are well prepared for and guided through decisions and applications.

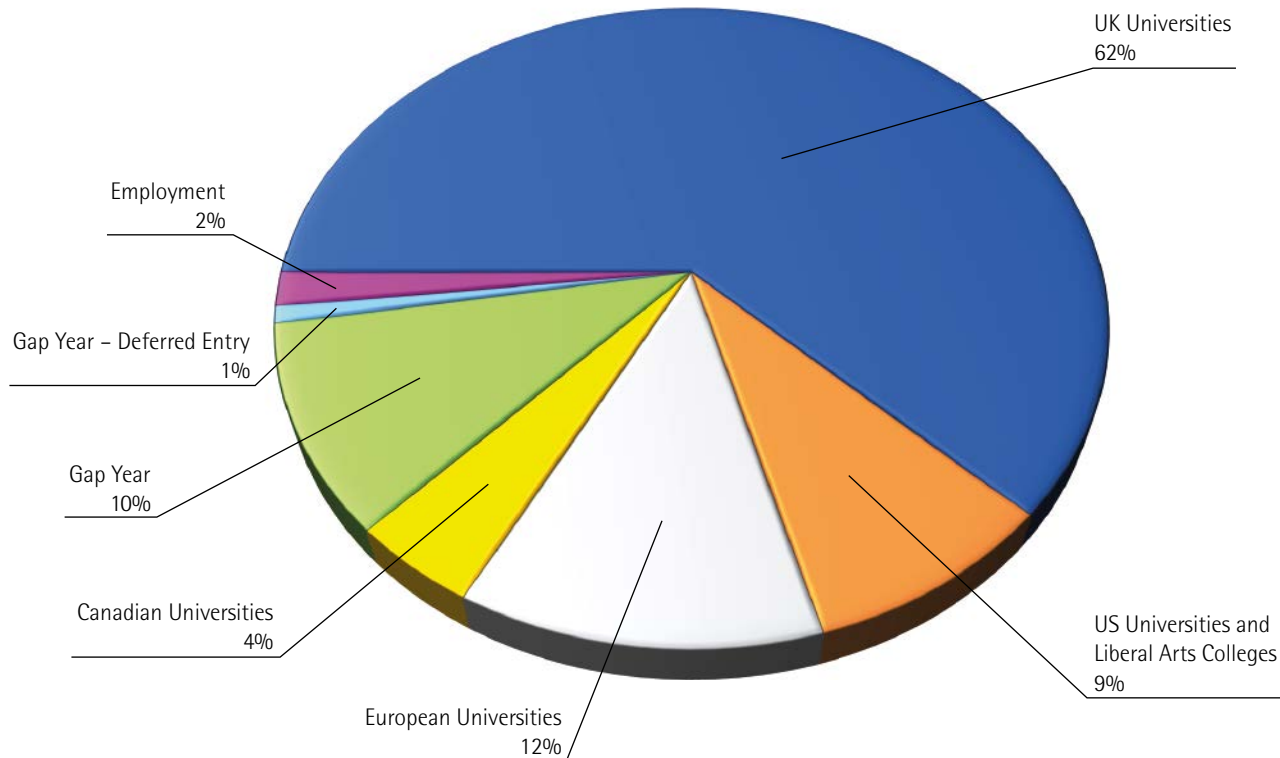
Most students start university immediately, while a number choose to develop their personal skills and interests by taking a 'gap year' in which to travel, work or volunteer and thus improve their career prospects prior to continuing in education.

Students applied far and wide and have been successful in taking places at prestigious universities around the world. This year's excellent results have ensured success for our students, particularly at a time when competition is strong. Many students have had offers from universities in different countries and been able to take up their first choice university.

Students who left St. Clare's in 2016 will be in:

DESTINATION	STUDENTS
UK universities (see below for details)	72
US universities and liberal arts colleges (see below)	10
European universities and colleges: Bergen (Norway), Bocconi (Italy), EH Lausanne (Switzerland), Erasmus Rotterdam x2 (Netherlands), Frankfurt (Germany), Francisco de Vitoria (Spain), IE x2 (Spain), IUBH (Germany) Medical University of Warsaw (Poland), Sciences Po x2 (France) Sciences Po and UBC dual degree (France/Canada) and Utrecht (Netherlands).	14
Canadian Universities: McGill (x2), Toronto (x2) and UBC	5
Gap year: This year the students' gap year plans include: volunteering as an English teacher in a rural community in Nepal, working as an auxiliary nurse at the gynaeology department at the JR in Oxford and applying for medicine, undertaking a medical gap year research project before travelling, working in the family business for a year and undertaking technical art courses in both the USA and Spain before applying to art schools.	13 1 of whom is holding a deferred entry place.

2016 WORLDWIDE DESTINATIONS OF IB LEAVERS



US AND UK UNIVERSITY LEAGUE TABLES

For 2016, 38 St. Clare's graduates have been placed in the top 20 UK universities as ranked by the independent Complete University Guide 2016, with 16 in the top 10 (see below).

Five students are taking up places in Top 100 US universities, 3 of them at Top 50 Institutions and a further 3 have gone on to a Top 20 Liberal Arts College according to the standard ranking list by U.S. News and World Report. Rankings represent an average of each university's provision, for example in teaching, research, entry standards, staff-student ratio, degrees awarded, job prospects, resources, retention rates and spending per student.

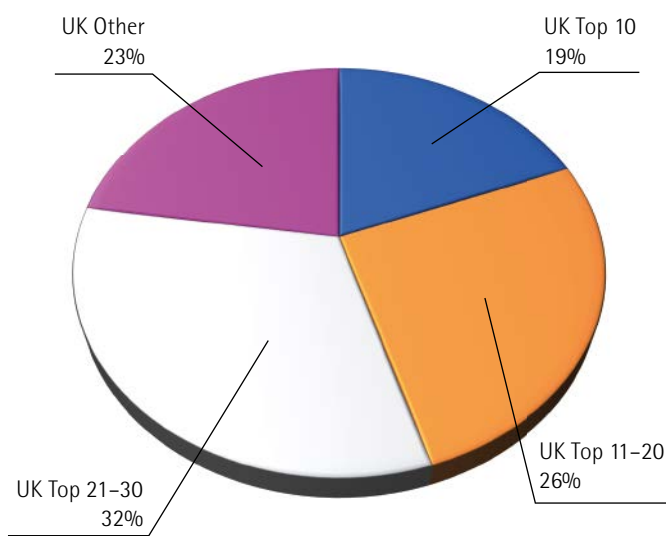
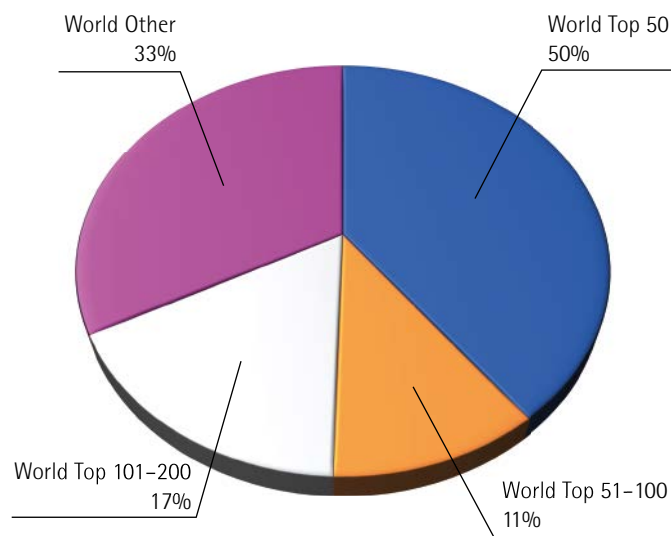
Students placed in top US and UK universities are as follows:

US TOP UNIVERSITIES AND COLLEGES

	NO. OF STUDENTS
Haverford (Liberal Arts College)	2
Wesleyan (Liberal Arts College)	1
Boston College	1
New York University	2
The George Washington University	1
University of Pittsburgh	1

TOP UK UNIVERSITIES

	NO. OF STUDENTS
Oxford	3
London School of Economics	2
Imperial	1
Durham	1
St. Andrew's	2
Warwick	2
Surrey	2
Lancaster	1
Exeter	2

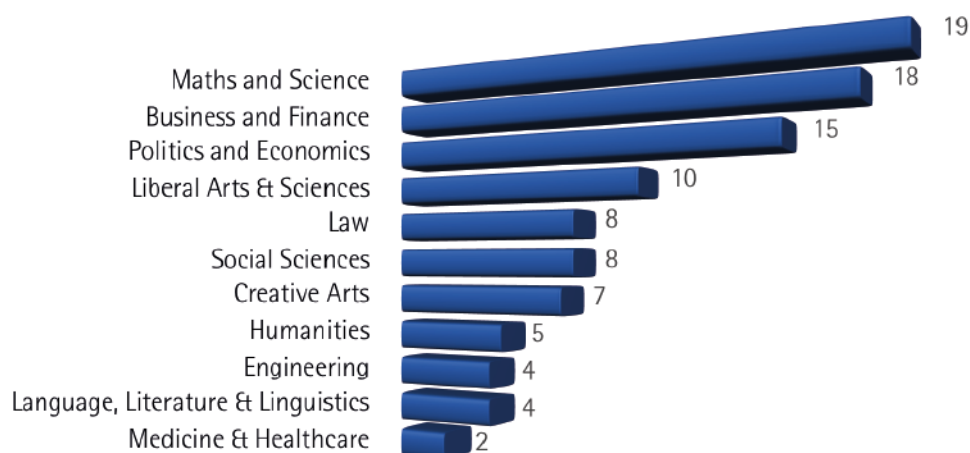


St. Clare's is an international school and as such, our students view universities from a global perspective. This year 71 (70%) of our current students are progressing on to a university in the top 1% in the world as measured by the Times Higher Education World Rankings and the QS World Rankings.

Classed in the other category are also specialist institutions who are top in their field. This includes:

- » 2 IE #3 European Business School (Financial Times Rankings).
- » 2 Sciences Po #4 for Politics and International Studies in the World (QS World Subject Rankings)
- » 1 Bocconi #10 in the world for Business and 17 for Economics (QS World Subject Rankings).
- » 1 Ecole Hoteilier Lausanne #1 World Industry Rankings for Hospitality (TNS)

The chart below gives an idea of the most popular subject areas this year.



Students have chosen to study a range of subjects including:

Aerospace Engineering, Biochemistry, Biology, Biomedical Science, Biotechnology, Chemistry, Chemical Engineering, Civil Engineering, Classics, Computer Science, Criminology, Drama, Economics, English Literature, Fashion Marketing, Fine Art, Film Directing, Genetics, Geology and Nutrition, Global Sustainability Science, History, Information Management for Business, International Aviation Management, International Development with Economics, Law, Liberal Arts, Management, Medicine, Neuroscience, Pharmacology, Philosophy and Religious Studies, Philosophy, PPE (Philosophy, Politics and Economics), Physics, Psychology and Social Anthropology.

We pride ourselves on helping students to make well-informed choices and applications for their future. Our careers and higher education programme provides a strong foundation for future study, work and life. Students comment on its value many years after they have left St. Clare's.

QUOTES FROM STUDENT FEEDBACK FORMS

“I was made to question why I want to study that subject. I think it really made me think if it is right for me or not.

“It was easy to find useful information on the Careers website. In leading up to university application, there was always support available to help with UCAS and personal statements. Throughout the first year, we were encouraged to do career research, so everything was not left to do at the start of the second year, which would have been impossible!

“You could pop in to see Melanie whenever you had a question; you never felt that you had to make decisions on your own.

“Everything was well organised and we were helped to manage our time effectively, which really helped.

“With the UK – helped me to choose universities based on the factors that were most important to me. With the US – helped me to navigate the college admissions process as a St. Clare's student. Also helped me to come up with a really good list of colleges to apply to.

“It gave me more options I wouldn't have thought about otherwise.

“It is very personal, the careers adviser knows me and cares for me and where I will go.

“Support is superb, as I was never turned down.

Melanie Moorhouse
Head of Careers

Paul Sinclair
US Universities Adviser

CHOOSING YOUR SUBJECTS

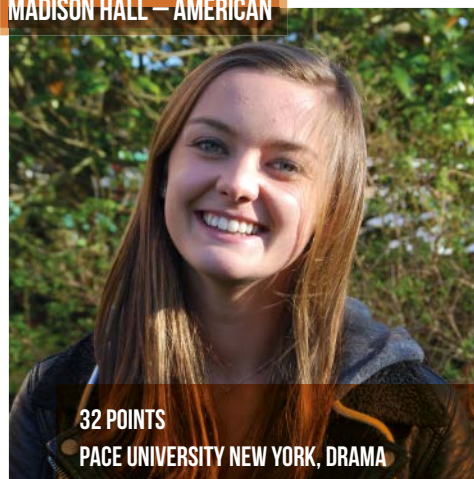
- » Students have to choose six subjects, one from each group
- » Three of these must be at higher level (H) and three at standard level (S)

HOW TO CHOOSE YOUR PROGRAMME:

- » Choose your Highers from those subjects which you enjoy most and which support your career aspirations. These subjects are the ones that you will study in depth.
- » Choose your Standards to give you a good balanced programme.

You will be asked to record these subject choices on the application form.

MADISON HALL — AMERICAN



32 POINTS

PACE UNIVERSITY NEW YORK, DRAMA

The IB has broadened my horizons and opened my eyes to a greater perspective of the world as a whole. I think that personally, I have developed tremendously over the last three years due to the IB. I've met so many memorable people and amazing personalities, I will truly never forget my time here.

GROUP	SUBJECT	DETAILS
1	LANGUAGE and LITERATURE	Your first or best language. The following Literature courses are offered: H and S: English, German, Italian. S only: Albanian, Arabic, Bulgarian, Czech, Dutch, French, Greek, Icelandic, Japanese, Korean, Lithuanian, Mandarin, Norwegian, Polish, Portuguese, Romanian, Russian, Serbian, Slovak, Slovene, Spanish, Swedish, Turkish, and other languages on request. Language and Literature is available only in English.
2	LANGUAGE ACQUISITION	A second language. H and S: English, French, Spanish, Chinese B and German. Previous study of at least 3 years is necessary. S only: Chinese for beginners and Spanish for beginners.
3	INDIVIDUALS and SOCIETIES	H or S: History, Geography, Psychology Economics. H only: Business and Management. S only: Global Politics
3 or 4	INTERDISCIPLINARY	S only: Environmental Systems and Societies.
4	SCIENCES	H or S: Biology, Chemistry, Physics.
5	MATHEMATICS	H: Mathematics S: Mathematics S: Mathematical Studies
6	ELECTIVES	H or S: Visual Arts, Music, Theatre, or another Language or another Individuals and Societies subject or another Science.

SUBJECTS

1 STUDIES IN LANGUAGE AND LITERATURE

LITERATURE

- » Literature is the study of a range of literary works e.g. novels and poetry in the mother tongue.
- » Most of the students in the class will be native speakers of the language and will have been educated in the language.
- » Only English, German and Italian are offered at both Higher and Standard levels.
- » If you want to study Standard level and your language is not mentioned in the list, do not worry: we will almost certainly be able to find a teacher for you.

THE COURSE

You will study about 13 (H) or 10 (S) works of literature in the language, at least 3 of which will be World Literature in translation. Written and spoken communication in the language is assessed by coursework and external examination.

PREVIOUS KNOWLEDGE

You must have native or near-native knowledge of the language. Wide background reading will give students a head start, but is not essential.

LANGUAGE AND LITERATURE

Language and Literature is available only in English. It is aimed at bilingual students who are already taking Literature in their mother tongue (in this case the student would have two subjects in Group 1 and possibly none in Group 2).

Native speakers of English may study Language and Literature as an alternative to the Literature course.

2 LANGUAGE ACQUISITION

- » Language B is for foreign learners of the language.
- » It is not primarily a literary course, though literature is studied as a means of understanding the complex use of the language.
- » The emphasis is on communicative skills in speech and writing and on understanding the culture of the language.

THE COURSE

Students learn the language skills of reading, writing, listening and speaking through a range of resources related to three themes: Relationships, The Media and Global Issues. Reading and writing are tested by externally set examinations and written coursework (70%), while oral skills are tested internally (30%).

PREVIOUS KNOWLEDGE

You should have at least 3 years of serious study in the language, a good knowledge of grammar and vocabulary, and be fairly fluent in ordinary conversation.

LANGUAGE B AB INITIO (BEGINNERS)

- » If you want to learn a new language or do not have a second language, you should choose Spanish Ab Initio or Chinese Ab Initio.
- » These are offered at Standard level only.

THE COURSE

You will acquire a good basic knowledge of the language so that you can engage in conversation to do with everyday situations and understand and write short pieces.

PREVIOUS KNOWLEDGE

Obviously you don't need any. However, any start you can make on the language (e.g. a Teach Yourself book) in the summer before you come to us would help you to get a good start.

JIANGNAN LIAO – CHINESE



42 POINTS
UCL, ECONOMICS

Life at St. Clare's is just like the IB: challenging but fascinating. Studying in such a diverse and friendly environment has encouraged me to discuss different ideas, undertake challenges and become a more independent thinker.

3

INDIVIDUALS AND SOCIETY

PREVIOUS KNOWLEDGE

All these courses may be taken without previous knowledge. Clearly, if they have been studied before, this will be helpful.

BUSINESS AND MANAGEMENT (H ONLY)

You will be learning to understand why business organisations are formed, the principles, practice and basic competence employed to make them successful and their decision-making processes.

Real life examples and case studies will be used. Assessment is via project (25%) and final examinations (75%).

ECONOMICS (H AND S)

You will learn how to use economic reasoning and apply the tools of economic analysis to everyday problems and social issues. You will learn how individuals and societies organise themselves in the pursuit of economic objectives and will seek answers to questions such as:

- » How are resources allocated between alternative uses to attain maximum levels of output?
- » How do governments intervene in the economy to foster desired levels of economic stability and growth?
- » How do societies around the world interact with each other, via trade or other mechanisms, to create an international economic framework?
- » How do societies create new wealth?
- » Why have some been more successful than others?
- » Why does the spectre of poverty still haunt many nations?

GEOGRAPHY (H AND S)

Geography is a bridge between the social and the natural sciences. The IB programme reflects the concern with man's relationship with the environment while retaining topics such as human geography, population, economic development and human settlements. Examples of human and physical geography are taken from all over the world.

The subject is assessed through a combination of coursework and a final examination. The Standard level course deals largely with some current global problems (e.g. population, refugees, inequality, urbanisation, environmental hazards, food), and is attractive to students with an interest in current affairs and the environment.

Higher Geographers study more physical geography with an emphasis on geomorphological processes. Both Higher and Standard level students will use spreadsheets, computer mapping and geographical databases.

HISTORY (H AND S)

Higher level History covers major trends in Europe and the Middle East from the mid 19th century. In the 20th century, the course extends to other parts of the world to avoid a Eurocentric view. One of the major themes is the Arab-Israeli conflict, which helps the student better understand the tensions in the world today.

Higher and Standard level students study three twentieth century world topics:

- » the causes, practices and effects of war,
- » origins and development of authoritarian and single-party states, and
- » the Cold War.

Both H and S Level students prepare a piece of Internal Assessment on a topic of their choice.

PSYCHOLOGY (H AND S)

You will be helped to an increased understanding of the nature of human beings, as individuals and in social groups, and you will learn to appreciate psychology as an academic discipline. You will learn the various methods of psychological enquiry and examine the subject from biological, cognitive, learning and humanistic perspectives. Internally assessed experimental work during the programme will count (20%) towards the final marks.

GLOBAL POLITICS (S ONLY)

Global Politics familiarises students with the framework for understanding the perspectives, behaviours, and decision-making procedures of international organisations, governments, and various other national and sub-national groups.

GINO MAGNINI – ITALIAN



39 POINTS

EDINBURGH, ECONOMIC HISTORY

It was when I called St. Clare's "home" that I understood it had become a part of me. I will always be thankful to St. Clare's for these two amazing years.

3 OR 4 INTERDISCIPLINARY

ENVIRONMENTAL SYSTEMS AND SOCIETIES (S ONLY)

This is an interdisciplinary course which covers the requirements of Group 3 and Group 4 subjects. This broad course aims to give you an understanding of scientific method whilst at the same time heightening your awareness of the

multidisciplinary (biological, geographical, political, economic, social and historical) aspects of environmental issues. The areas studied are: Ecological principles; Ecosystems; Conservation and Biodiversity; Pollution; Population and Resources.

4 SCIENCES

All science courses on the IB share a common structure. Each is in three parts:

- » a core of material that is studied at both Higher and Standard levels,
- » additional material that is taken at Higher level only,
- » options, which may be for Standard level only, Higher level only, or for both levels.

All students take part in a cross-disciplinary Science Group Project. The assessment pattern is the same for all sciences. Exams at the end of the course contribute 76% of the final mark. The remaining 24% is based on practical work set and assessed by the College.

PREVIOUS KNOWLEDGE

For Higher level sciences, some previous knowledge is essential, though a general science course should be sufficient. At Standard level, previous knowledge is helpful, and students without a science background should try to do some reading before they start.

BIOLOGY (H AND S)

In Biology you will study the science of living things and how they function. The Core includes Cells, Genetics, Ecology and Human Physiology. The additional material takes these further, and adds some more, such as Plant Science, and Defence Against Disease. Linking themes are Structure and Function; Universality versus Diversity; Equilibrium within Systems; and Evolution. Some Options are: Diet and Human Nutrition; Evolution; Ecology and Conservation; and Further Human Physiology.

CHEMISTRY (H AND S)

In Chemistry you will study materials, and the conversion of substances one to another. Core and Additional Higher level: material covered here includes such important themes as Atomic Theory; Bonding and Structure; the Periodic Table; Acid-Base and Oxidation-Reduction Behaviour; Energetics; Equilibrium; and Organic Chemistry. Some Options are: Human Biochemistry; Environmental Chemistry; Fuels and Energy; Modern Analytical Chemistry.

PHYSICS (H AND S)

In Physics you will study the properties and interactions of matter and energy. Core and Additional Higher level: these introduce the central concepts of Mechanics; Atomic and Nuclear Physics; Waves; Thermal Physics; Electricity and Magnetism. Options: Standard only: Mechanics; Atomic and Nuclear Physics; Energy. Higher and Standard: Biomedical Physics; History of Physics; Astrophysics; Relativity; Optics.

BRANDON GREENWOOD – BRITISH



32 POINTS
GAP YEAR

I originally came to St. Clare's because of its academic excellence and prestigious status. Whilst being here, however, I certainly received more than I bargained for. During my time at St. Clare's my international mindedness flourished in harmony with my academic studies, preparing me for the diverse world ahead.

5

MATHEMATICS

MATHEMATICS (H)

This is a challenging programme designed for students with a strong background and ability in mathematics. You may choose this level because you aim to study Mathematics at university, because you need it to support university study in subjects such as physics, engineering or technology, or simply because you enjoy mathematics.

MATHEMATICS (S)

This is a demanding course requiring strong background knowledge and ability. The programme contains a broad range of mathematical topics and is designed to help those

students who wish to pursue further studies with a high degree of mathematical content such as chemistry, economics, geography and business.

MATHEMATICAL STUDIES (S ONLY)

This programme is designed to develop the skills needed to cope with the mathematical demands of a technological society. Emphasis is placed on the application of mathematics to real-life situations. You should choose this course if you do not need advanced mathematics for your future studies.

6

ELECTIVES

In this group you can study another subject from Groups 2, 3 or 4 i.e. another second language, another Individuals and Societies subject or another science. Or, you can take:

VISUAL ARTS (H AND S)

There are two parts to the course: Studio Work (practical) and Research Workbook (theory). Higher level students study both. Students choose either a course which is 60% practical and 40% theory or alternatively a course which is 60% theory and 40% practical.

You will discover, develop and enjoy different means of creative visual expression in the studio and elsewhere. You will also learn about the visual arts in all their forms, from the past, the present, and emerging trends.

Choose this subject if you have some practical skills in drawing and painting and some natural talent and interest in the subject.

MUSIC (H AND S)

You will gain a worldwide and historical perspective of music as well as studying its elements. You will also create and perform music. The Standard level is a subset of the Higher level. It is helpful to have some earlier study and some musical qualification.

For Higher level it is essential to be able to play a musical instrument or to offer the voice. At Standard level the ability to play and/or sing at a reasonable level is required.

THEATRE (H AND S)

You will learn to understand the nature of theatre by making it as well as studying it. Making will include developing performance skills and mounting theatre productions. Studying will include historical and theoretical theatre developments and play analysis and interpretation. No previous experience is required, though it would be helpful.

LUCIEN LANSON HIRIGOYENBERRY — FRENCH



43 POINTS
GAP YEAR, TEACHING ENGLISH IN NEPAL

I don't know if it is the international environment, the quality of the teaching or the diversity of backgrounds found at St. Clare's that broadened my views of the world but it goes without saying that I have spent two unforgettable years of my life here. I have grown immensely and I am incredibly grateful for everything that has happened to me.

CORE ELEMENTS OF THE IB PROGRAMME

The IB Diploma is a complete educational programme. The subjects provide both breadth and depth, and there are three core elements which help to provide overview, additional academic specialisation, and recognition of interests outside the classroom. These are the course in the Theory of Knowledge, the Extended Essay and Activities (CAS).

THEORY OF KNOWLEDGE

While students choose their programmes from a range of subject areas, these are still separate subjects. With the Theory of Knowledge course, the IB adds two further qualities to a student's study. First, by looking at the pattern of all knowledge, that which is gained from subject studies and that which is gained from friends, family, the media and other sources, a sense of perspective is achieved. Students can see how new knowledge relates to the world of knowledge as a whole. Second, students are trained in the critical evaluation of knowledge, so that they can see how different types of knowledge have to be judged in different ways, and so that they can assess the value of new knowledge claims.

MAXIMILIAN CAMINO FEIN – ITALIAN



38 POINTS

NEW COLLEGE OF THE HUMANITIES, ECONOMICS

I never expected to feel so welcome and at home at a place full of strangers! St. Clare's really is a second home for me. The class sizes, the teachers and the great activities are only a part, but the different cultures, the friendly atmosphere and the beautiful buildings in Oxford, combined with the coziness of the college make me not want to leave this school. I feel very successful at St. Clare's and think that I have taken full advantage of all the possibilities that the school has to offer. I love it.

EXTENDED ESSAY

During the two years of their Diploma studies, students are required to undertake a specific piece of research. This is usually research into an aspect of one of their subjects. For example, History students might look at a battle or a political incident that is of special interest to them. Economics students might look at the performance of a company that they know well. Biology students might study one particular ecosystem or one organism in that system.

The results of this research must then be written up in the form of a research paper of up to 4000 words. This can be a challenging task, but intellectually very satisfying for a good student.

CAS

CAS stands for Creativity, Action and Service. It is realised by the IB that many students will have extensive interests outside their academic studies. In order to give recognition and encouragement to these, the IB asks them to spend one afternoon or the equivalent time each week undertaking activities that come under one or more of these headings. For example, activities that involve Creativity include Studio Art and Photography. Action could be a team sport like football or an individual activity like swimming. For Service, students may help people in the community such as the old or the disabled, or may help charities such as Oxfam or each other (by teaching a language, for example). Some activities cover more than one heading. For example, a play performed at a local school or old people's home may well involve creativity, action and service.

PSHE

Though not an assessed part of the IB programme, St. Clare's offers students a course in Personal, Social and Health Education covering a wide range of topics such as relationships, study skills, citizenship, substance abuse and healthy eating.

The PSHE curriculum includes a programme to develop career management skills and preparation for higher education. The college provides a dedicated careers and higher education adviser to co-ordinate this programme and to provide individual guidance.

GRADING SYSTEM: IB AND ST. CLARE'S

The system used for internal purposes during the course is that employed by the International Baccalaureate Organisation in the award of the Diploma. Each of the six subjects studied is graded on a 1-7 scale as follows:

GRADE	DESCRIPTION
7	Excellent
6	Very good
5	Good
4	Satisfactory
3	Mediocre
2	Poor
1	Very poor

AWARD OF THE DIPLOMA

The IB Diploma will be awarded to candidates who in the examinations obtain a total points score of 24 or more except for the following conditions.

1. A failure to complete CAS
2. Grade E in TOK or Extended Essay
3. An N any subject
4. Any grade 1
5. Four grade 3's or below
6. Three grade 2's
7. Less than 12 at HL
8. Less than 9 at SL

THEORY OF KNOWLEDGE AND EXTENDED ESSAY

Each is graded on one of 5 bands:

- BAND A** Work of an excellent standard
- BAND B** Work of a good standard
- BAND C** Work of a satisfactory standard
- BAND D** Work of a mediocre standard
- BAND E** Work of a poor standard

In Theory of Knowledge, written work completed during the course is graded externally. Presentations in class are assessed at St. Clare's. Extended Essays are graded externally.

ARRIVING AT A TOTAL POINTS SCORE

The total number of bonus points awarded is determined according to the following matrix.

		THEORY OF KNOWLEDGE				
		A	B	C	D	E
EXTENDED ESSAY	A	+3	+3	+2	+2	0
	B	+3	+2	+2	+1	
	C	+2	+2	+1	0	
	D	+2	+1	0	0	
	E	0				

For example, a candidate who achieves level B for Theory of Knowledge and level C for the Extended Essay will be awarded two bonus points.

The combination of points for subjects and bonus points means that the maximum possible points score for the Diploma is 45.

INTERNALLY AWARDED GRADES

During the course, work is graded on the International Baccalaureate system and the grades form part of the student's internal record. These internally awarded grades appear on the transcripts issued at regular intervals throughout the course. These internal grades form the basis of the predicted grades for university applications and for the International Baccalaureate Organisation.

INTERNAL GRADES ARE AWARDED AS FOLLOWS:

- a. Exam Grades – in the first year awarded on the basis of performances in formal exams held in November and June as well as in-class assessments. In the second year awarded on the basis of formal exams in February as well as in-class assessments.
- b. Course Grades – awarded at the end of each term on course work done during the term. They represent an average grade for oral and written work actually produced by the student.

TRANSCRIPTS

These give a record of grades achieved during the course, along with activities taken. They are produced at the end of each term, and sent to parents with the reports. They are suitable for sending to universities e.g. in the United States.

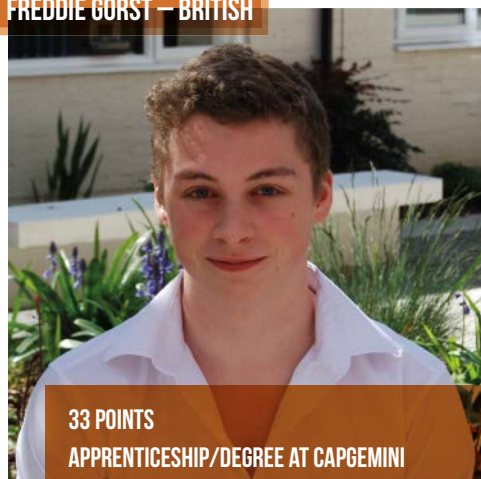
THE PRE IB PROGRAMME

The Pre IB programme at St. Clare's is a one year course designed to prepare students for the IB Diploma. The course consists of the same variety of subjects as the Diploma but is structured in a modular way so that students can sample a range of subjects in order to ensure they make the right subject choices when beginning the IB Diploma. Most students do the Pre IB programme because they need a further year's study to deepen and broaden their subject knowledge or to improve their English. Though most students start the Pre IB course in September and complete the full year, some students join part way through the year e.g. in January.

At the start of the academic year, all Pre IB students are tested in English and Mathematics to ensure that the groups they are put in offer the appropriate challenge and support. The year is divided into 5 modules, each of 7 weeks. At the end of each module, students sit exams in all subjects and the results of these are sent home to parents.

The Pre IB programme at St. Clare's, like the IB Diploma upon which it is modelled, consists of 6 subjects:

FREDDIE GORST – BRITISH



33 POINTS
APPRENTICESHIP/DEGREE AT CAPGEMINI

I have really enjoyed my time at St. Clare's. The student population is incredibly diverse and you will leave here with friends from every part of the world, and although we do enjoy our free time, there is still a strong working atmosphere which pushes everyone to perform to the best of their abilities. Furthermore, the teachers are all fun and inspire you to work hard in their subjects. It's a great place to learn, achieve good grades but also to enjoy your last two years before university education.

1) ENGLISH – 8 HOURS A WEEK

This is considered the most important subject and is given a greater time allocation than any other. Students are placed in small groups with others of the same ability level. Topics include newspaper articles, documentaries, films, literary texts, etc allowing students to develop the ability to manipulate language in different contexts.

Native or near-native English speakers principally study Literature.

Native English speakers who intend to continue their second language at IB study a Modern Foreign Language for two of these hours a week (usually French, German or Spanish). This is not available to other students. This is intended for students who have studied a language for between 3 and 5 years so is at Language B level. It is not for fluent speakers or beginners.

2) WORLD LITERATURE – 2 HOURS A WEEK

The aim of the World Literature course is to introduce students to literary concepts in preparation for the Literature course in their mother tongue and at the same time to improve students' reading skills in the common language of English.

3) HUMANITIES – 4 HOURS A WEEK

In Modules 1, 2 and 3, students take History, Geography and Business. In Module 5, they can also study Economics.

4) SCIENCE – 4 HOURS A WEEK

Students study separate Modules of Biology, Chemistry, Environmental Systems and Physics. The course is a mixture of theory and practical experimentation.

5) MATHEMATICS – 4 HOURS A WEEK

Students are taught in groups divided by mathematical ability but they all study the same topics in the same order. The more advanced groups study the topics in greater depth. Topics covered are: Probability and Statistics, Transformations and Matrices, Number, Algebra and Geometry and Trigonometry.

6) ARTS – 2 HOURS A WEEK

Students take one module of Music, one of Theatre Arts and one of Visual Arts. All three Arts subjects are a mixture of theory and practice and are designed to give students a taste of subjects they may well not have taken before. No previous knowledge is required. In the final module, all Arts students combine to produce a musical.

SCHOLARSHIPS AND BURSARIES: IB DIPLOMA

SCHOLARSHIPS

Scholarships are awarded to exceptional students who could not otherwise attend the College. They are offered on the basis of an assessment of the applicant's school record, confidential references and performance in an examination and interview held in Oxford. All awards are means tested, i.e. they take account of the financial circumstances of the applicant's family.

Scholarships can apply to both tuition fees and accommodation fees. No more than two full awards are made. Most are partial awards, covering a proportion of total fees.

Attendance in Oxford for interview and examination is required to be considered for a scholarship.

Scholarship applications are considered in January of the year of proposed entry. The deadline for applying for a Scholarship for entry in September 2017 is Friday 20 January 2017 and Scholarship Day is on Saturday 25 February 2017. Please contact the Admissions Office for further details and a Scholarship Application Booklet.

BURSARIES

Bursaries are partial fee awards made on the basis of financial circumstances and likely contributions to and benefit from the IB Course at St. Clare's. Bursaries may be awarded to applicants who attend the Scholarship Day. Other bursary awards may be made after the award of scholarships, from March onwards before the September of proposed entry, subject to availability of funds.

NABILA KESINGTON – BRITISH-NIGERIAN



38 POINTS

**BATH, INTERNATIONAL DEVELOPMENT
WITH ECONOMICS**

St. Clare's is a place where I've been able to explore my academic and non-academic interests by having discussions with people from all over. It's helped me prepare for what comes my way in the future and has been a phenomenal experience.

Scholarships and bursaries are only awarded to students on entry to the IB Diploma. They are not available for Pre IB applicants.

St. Clare's particularly welcomes applications for scholarships and bursaries from students who live in or near Oxford and could attend as non-residential (day) students.

Email: admissions@stclares.ac.uk for more information.

WILLIAM GREY – NORWEGIAN



42 POINTS

EDINBURGH, ECONOMICS AND POLITICS

St. Clare's is a unique learning environment where I have been able to develop a large degree of independence both academically and personally. Most special for me has been all the friends I have made here, people I think will be my friends for life. Coming to St. Clare's is one of the best decisions I have made, as I have had the opportunity to meet such diverse and friendly people.

CONGRATULATIONS TO THE CLASS OF 2016

100%
PASS RATE





www.stclares.ac.uk
Tel: +44 1865 552031
Fax: +44 1865 310002
Email: admissions@stclares.ac.uk

St. Clare's, Oxford
139 Banbury Road
Oxford
OX2 7AL, UK