

# INTERNATIONAL BACCALAUREATE

To **advance international education** and **understanding**



# WELCOME

FROM THE PRINCIPAL



Welcome to St Clare's, a unique environment where students enjoy an exceptional international education.

Over the last year we have celebrated our 70th anniversary of providing a first-class international education to students from all over the world. Founded after the Second World War to bring nations together, today our students come from over 45 countries. Our mission of advancing international education and understanding remains as important as ever.

Every student in our community is motivated to achieve their potential and create the best future. With many adults working several careers in their lifetime, forward-thinking students understand the need to choose a curriculum that offers breadth and depth. As the oldest and most experienced IB World School in England, we have become the smart choice for ambitious students who know that here they will be taught by expert IB teachers in small class sizes with tailored individual support, and that they will learn alongside other highly motivated students and achieve impressive results. With the full support of our exceptional University and Careers Counselling team, our students progress to leading universities worldwide. Typically around 90% of students are accepted into their first choice of university course, and our graduates go on to excel in a wide range of fields.

With over fifty co-curricular clubs and sports, and a bespoke leadership programme, we also believe in holistic education – in developing students' independence, talents and leadership skills. Walking around, you see individualism and character, engagement with the community, responsibility, and happy, fulfilled young people readying themselves for the world.

What stays with our students is much more than an academic education, or the enduring memory of how much they enjoyed their time here. The legacy students take with them from St Clare's includes a rich inner life, strong self-management skills, confidence and independence, the change-making skills to make a difference, and a network of friends across the world.

**Duncan Reith,**  
Principal

# Why Study at St Clare's, Oxford?

We are an independent, co-educational, day and boarding college located in a beautiful area of north Oxford.

## Academic Progress

- 1 Student progress:** We are a top IB school in the UK for student progress. Turn to page 6 to find out why.
- 2 IB World School:** We have been teaching the IB Diploma for nearly 50 years, longer than any other school or college in England. Our teachers write and are involved in the production of the IB textbooks, and teach the IB teachers of the future.
- 3 Academic stretch:** Our students think beyond the curriculum through academic clubs, national and international competitions, research projects and the extended essay, and having access to public university lectures and other academic resources in Oxford. Some of our teachers teach at local universities, and our library is stocked to undergraduate level.

## Student Experience and Personal Development

- 4 IB ethos:** Internationalism is a core part of our values, through our diverse student body of over 45 nationalities and throughout our IB curriculum, resulting in responsible and capable students of the world with high aspirations.
- 5 Independence and autonomy:** Our students learn to self-manage and balance their academic studies, social lives, and the broad range of weekly activities and events.
- 6 Individual development:** Learning is not limited to the classroom but extends to all aspects of student life and supports the development of the whole person.
- 7 Wellbeing:** We cultivate a sense of belonging within our safe and supportive community. Students develop high-quality relationships with both their peers and college staff, through an environment of mutual respect.
- 8 Student experience:** Our students stand out for being happy, fulfilled young people readying themselves for the world. It matters hugely to us that our students have an enjoyable experience.

## Your Future Made Possible

- 9 Access to world leading universities:** Our dedicated University and Careers Counselling team give individual support to all our students in reaching the best university for them, including preparing applications for university, internships, and gap years around the world.
- 10 Access to highly selective courses:** We have excellent acceptance rates for students wanting to study challenging subjects – last year saw 100% acceptance of those applying to a medical school.
- 11 Track record of career success:** Students' social confidence, independence, ability to learn in depth and academic results, make St Clare's graduates in demand in the workplace.



INTERNATIONAL BACCALAUREATE



# LIFE in Oxford



## Live and study in Oxford with people from around the world

Oxford is a safe, small and thriving multicultural city where you can enjoy beautiful architecture, picturesque parks, riverside walks and cultural sites as well as world-famous museums, libraries and art galleries. We are lucky to have resources such as the Bodleian Library, Ashmolean Museum and Modern Art Oxford on our doorstep, and there are lots of engaging talks, lectures, seminars, exhibitions and theatre shows to stimulate your learning.

Punting on the river is a popular pastime in Oxford, as well as theatres, music events, mini golf and bowling venues, cinemas, and escape rooms for a fun evening or weekend activity. For the

shopping enthusiast there is a wide selection of retail outlets, local markets and places to eat in the city including the popular Westgate Centre and Covered Market. Nearby there is also the famous Bicester Village outlet centre.

For those wanting to explore outside Oxford, there are nearby attractions such as Blenheim Palace, Cotswold Wildlife Park, and beautiful Cotswold villages. London is only an hour away by train and is the home of many attractions such as Buckingham Palace, Big Ben, the London Eye, Tower of London, Madame Tussauds and Oxford Street, as well as many Premier League football teams.



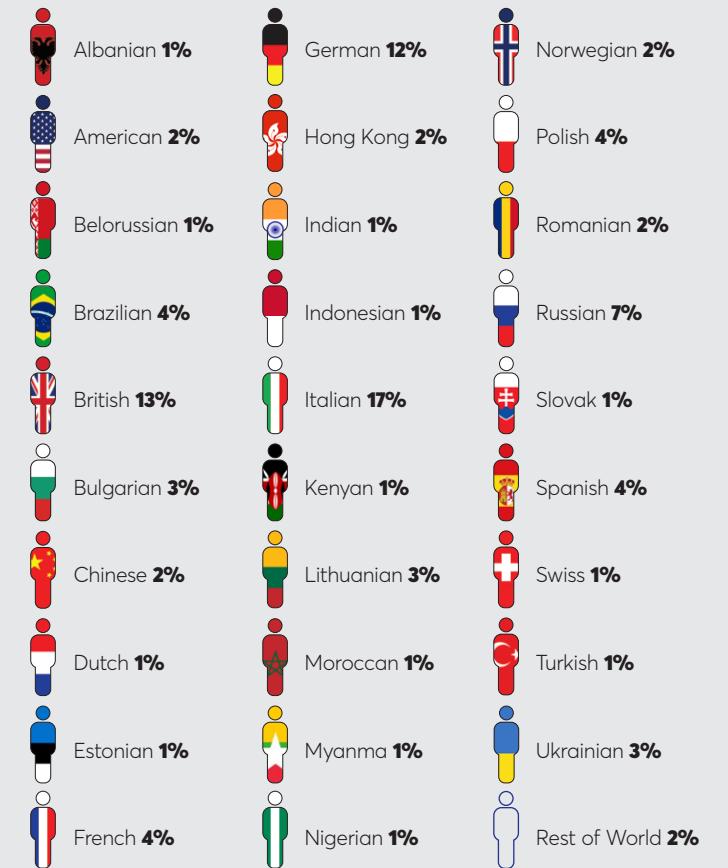
# INTERNATIONAL COMMUNITY

As you walk through the college, you will hear languages from all over the world being spoken. With students from over 45 countries studying with us, the diversity creates a welcoming and supportive environment for all backgrounds, cultures and traditions.

Global awareness is an integral part of the educational experience. We encourage students to value and respect differences as we believe learning is enhanced by the breadth of views and ideas. Our international outlook broadens perspectives and truly prepares students for further study and beyond.

The diagram is based on student data over 3 years. The cultural diversity extends beyond these nationalities. We also attract students from Albania, Australia, Argentina, Belgium, Canada, Cyprus, Egypt, Finland, Greece, Israel, Iran, Japan, Kazakhstan, Korea, Latvia, Malaysia, Maldives, Morocco, Peru, Philippines, Serbia, Singapore, South Africa, Sudan and Sweden, among many more.

## International student body (%)







**TOP 10%** OF IB SCHOOLS IN THE UK FOR STUDENT PROGRESS  
CEM REPORTS, 4 YEAR AVERAGE 2021-2024

There are several reasons why our students consistently make more academic progress here than they would at most other IB schools in the UK:

#### CHALLENGE

Everyone in our community is united by one key motivation: to step out of their comfort zone to grow, and to be the most globally aware and academically ambitious version of themselves. Ours is a culture of challenge: students challenge both academic targets and themselves to become more independent versions of themselves and to think more openly about their future.

#### TEACHING

Our teachers have unrivalled experience and specialist knowledge of the IB qualification. Our teachers write and are involved in the production of the IB textbooks, and teach IB teachers from around the world. Some are IB examiners and are involved in the development of the IB study programme.

#### LEARNING

Learning is through class discussions, group work, as well as practical and written assignments. Students are encouraged to take an active role in their learning whilst benefitting from the support of classmates and tutors in a shared teaching environment.

#### FACILITIES

Our experience is supported by our campus of 28 buildings, home of many academic resources, including well-equipped science laboratories, art studio, music studio, and modern teaching spaces. Our large university-level library is a fantastic resource for students, offering well-equipped study spaces and access to a broad range of materials, such as books in a variety of languages, journals, e-books and online databases.



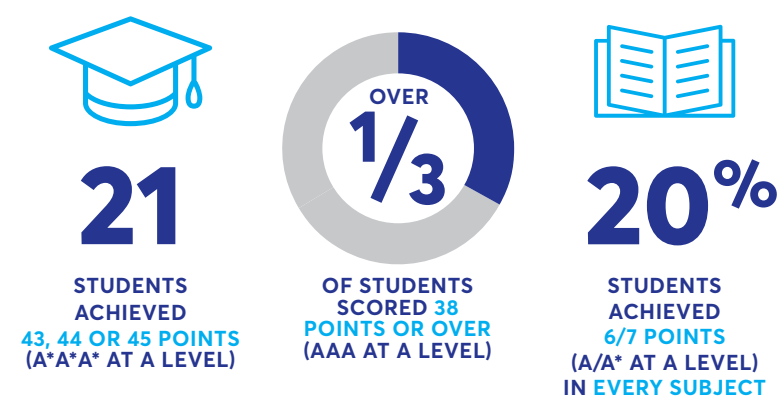
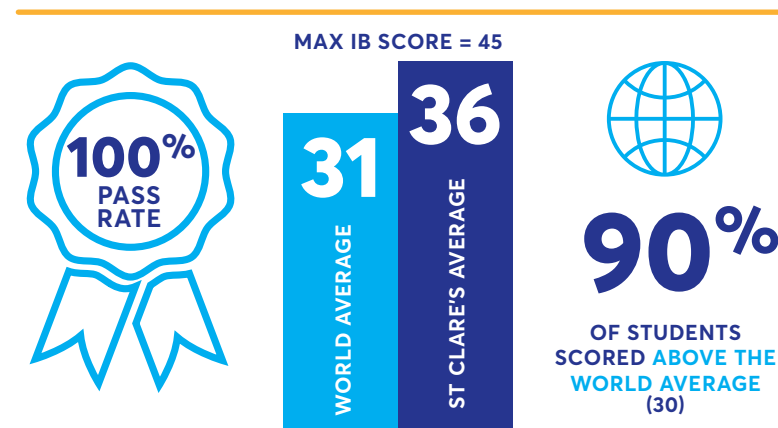
# STUDENT PROGRESSES



# OUTSTANDING RESULTS

Our IB Diploma results are consistently among the best and impressive across all ability levels. Our **average points score** over the **past 3 years is 36**, significantly higher than the **world average of 31**, and **90%** of students scored above this. Every year we have students achieve the **maximum IB score of 45**, placing them in the **top 1% globally**.

Our excellent set of IB results reflects the quality of our teaching and the outstanding work of our students. These results illustrate our successes over the last 3 years.



\*3 year average 2022-2024





# CAREERS and Higher Education

Personalised support to help you make informed decisions about your future career path.

Our University and Careers Counselling provision is among the best in the world. Our team act as coaches to everyone in our community, with unlimited one-to-one guidance alongside a rigorous careers education programme. Our students progress to the best and most exciting universities around the world, and we work hard to empower them to find the best fit for them and create the opportunities they want. We start with the student, not with piles of prospectuses or endless online searches. This is where aspiration and ambition meet knowledge and experience.

- Benefit from specialist expertise from experienced, full-time advisers on applying to university, apprenticeships, professional internships and gap year schemes across the world
- Access 1:1 guidance on demand
- Explore future education and career aspirations through experiential learning and self-reflection
- Specialist support with applications to Oxbridge, USA universities and medicine, dentistry and veterinary medicine courses
- Boost competitive professional skills including CV writing, presentation and interview skills
- Test centre for digital SAT; expert tuition offered at competitive rates
- Continued support for 3 years after graduation
- Access St Clare's Careers Explore, our online learning tool, to explore subjects and opportunities around the world for internships, gap years and summer schools



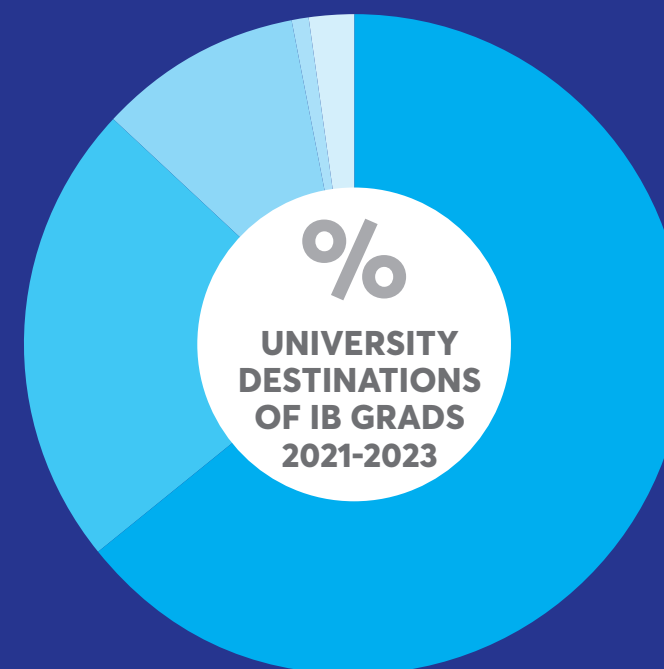
## Careers events

- Higher Education fair: one of the largest school-based fairs outside London, with representatives from over 90 universities and 20 countries
- Spring launch day and college seminar series: special insight into undergraduate study from visiting lecturers
- St Clare's Creates Futures: connect with alumni and mentors to learn about current trends and future developments in the workplace worldwide



# UNIVERSITY DESTINATIONS

The breadth of top-quality universities our students progress onto globally is a fantastic success story. Our excellent results give students the opportunity to select from a wide range of prestigious universities around the world, and around **90% of our students go to their first choice** of university.



- **64%** UK universities
- **23%** European universities
- **10%** USA universities and Liberal Arts colleges
- **1%** Canadian universities
- **2%** Rest of world universities

### University destinations include:

- Australia National University
- University of Amsterdam
- University of the Arts, London (UAL)
- Bocconi University
- University of California, Berkeley (UCB)
- University of California, Los Angeles
- University of Cambridge
- University of Chicago
- University of Durham
- ESADE Business School
- University of Hong Kong
- IE University
- Imperial College London
- Kings College London
- London School of Economics (LSE)
- Maastricht University
- McGill University
- Minerva University
- National University of Singapore (NUS)
- New York University (NYU)
- University of Oxford
- Pomona University
- Sorbonne University
- University of Southern California
- University of Toronto
- University College London (UCL)
- University of Warwick
- and many more...

### Popular subject areas include:

- Medicine/Dentistry/Veterinary Science
- Law
- Psychology
- Business Management/Economics
- Politics/International Relations
- Architecture
- Fashion
- Art, Design and Media
- Sciences/Engineering
- Music
- Computer Science
- and many more...

## OFFER STATISTICS (LAST 3 YEARS)

**8**

OFFERS FROM  
OXBRIDGE

**100%**

OFFER SUCCESS  
TO STUDY MEDICINE,  
DENTISTRY OR  
VETERINARY SCIENCE

**54%**

OF UK OFFERS  
WERE TO A RUSSELL  
GROUP UNIVERSITY

**7%**

OF UK OFFERS WERE  
TO A G5 UNIVERSITY





*The Careers programme stood out to me as the focus from the start was 'what do you want to do?', and I think that separates St Clare's careers support from a lot of other careers support I've had or heard of.*

*The emphasis isn't on where do you want to go to University, but more on 'what do you want to do, and how can we help you get there'.*

**Melanie**  
USA  
IB24, Pre-IB22 (Alumna)

# STUDENT WELFARE



At St Clare's we treat young people with respect and dignity. Our provision fosters independence of mind and personal responsibility. We positively prepare students for university and future life through encouraging them to learn to develop a balanced healthy lifestyle, considering their studies but also the importance of exercise and a social life.

The atmosphere is friendly and informal, with no school uniform and students on first-name term with teachers, removing barriers between adults and young people to make learning collaborative and exciting. Walking around, you see individualism and character, engagement with the community, independence, and happy, fulfilled young people readying themselves for the world.

Our safe and engaging environment nurtures individuals into self-assured, open-minded people with truly meaningful friendships. The relationships students develop whilst studying here promote international-mindedness, improve linguistic as well as intercultural competence and strengthen social skills - vital attributes for life. We focus on developing our students holistically, empowering them to become confident, resilient, healthy and independent young adults.

## Student Support Team

Our high staff-to-student ratio offers dedicated support, and our support teams work together to help students flourish:

- Personal Tutor
- House Parent
- Teachers
- Careers and Higher Education Advisers
- College Nurse
- Pastoral Team
- College Counsellor
- Peer Supporters







|                       |  |
|-----------------------|--|
| <b>Age:</b>           | 15-16 years old                                |
| <b>English Level:</b> | B1 Mid-High*                                   |
| <b>Start dates:</b>   | September, January or April                    |
| <b>Length:</b>        | 1, 2 or 3 terms                                |
| <b>Class size:</b>    | Maximum 15 students                            |
| <b>Lessons:</b>       | 30 hours of classroom lessons Monday to Friday |
| <b>Lesson length:</b> | 55 minutes                                     |

\*this is a guide, not a minimum requirement



## Core elements

These core elements create a holistic programme beyond the classroom, to help students acquire new skills and support their personal development.

|  |  |
|--|--|
| <b>Pre-IB Core</b><br>develops students' confidence and skills as independent learners and critical thinkers | <b>Careers Programme</b><br>to proactively engage with the concept of 'career' to support students' career development journey |
| <b>Creativity, Activity, and Service (CAS)</b><br>stimulates personal growth through new experiences         | <b>Bronze Duke of Edinburgh's Award</b><br>builds resilience, new skills, problem solving and self-awareness                   |
|  | <b>Personal, Social and Health Education (PSHE)</b><br>covering important and current topics                                   |

## Course structure and subjects

Our Pre-IB course is ideal preparation for the IB Diploma, with students developing key skills and attributes that are fundamental to IB study.

| Subject area                  | Course details   | Hours per week |
|-------------------------------|--|----------------|
| <b>English</b>                | Tiered classes based on language proficiency for academic stretch  | 4              |
| <b>English / New Language</b> | Intensive English language support or new language: French or Mandarin   | 2              |
| <b>Maths</b>                  | Tiered classes based on ability and prior experience   | 4              |
| <b>World Literature</b>       | Literature from across the world in translation  | 2              |
| <b>Science</b>                | <b>Choose 1 option per term:</b><br>• Biology<br>• Chemistry<br>• Physics  | 4              |
| <b>Humanities</b>             | <b>Rotation of all subjects in Term 1</b><br><b>Choose 1 option in Terms 2 and 3:</b><br>• Economic and Business<br>• Geography<br>• History<br>• Psychology   | 4              |
| <b>Arts</b>                   | <b>Rotation of all subjects in Term 1</b><br><b>Choose 1 option in Terms 2 and 3:</b><br>• Visual Arts<br>• Digital Arts (Photography)<br>• Music<br>• Theatre | 4              |

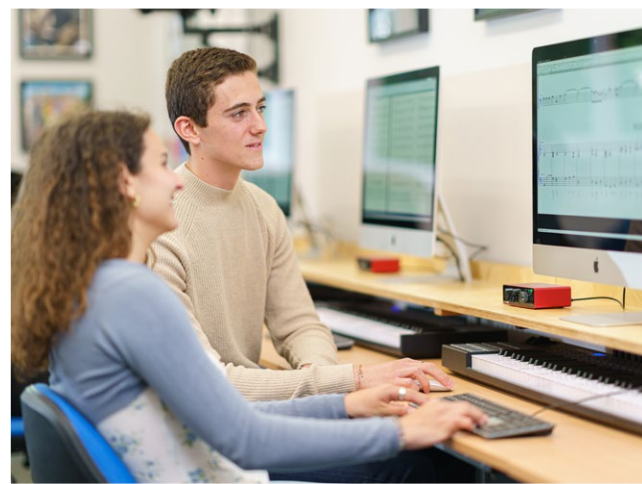
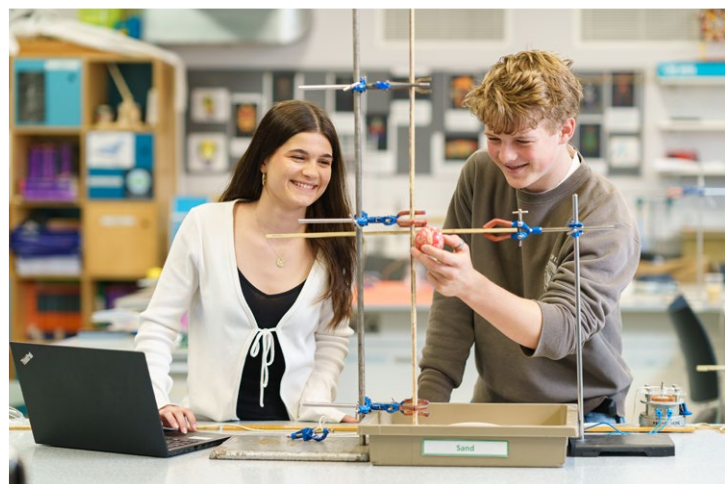
### Other features of our Pre-IB course:

- Activity weeks in September and June with a focus on bonding, teamwork and leadership
- 1-2 weekend activities/excursions per month (see page 21)
- Individual and group research projects on topics of students' choice and a collaborative Arts project culminating in an exhibition and presentation evening

Any students who do not wish to progress to the IB Diploma are well-prepared for the next stage of their schooling in any educational system.



# IB DIPLOMA



|                       |  |
|-----------------------|--|
| <b>Age:</b>           | 16-19 years old                                |
| <b>English Level:</b> | B2 Mid*  |
| <b>Start date:</b>    | September                                      |
| <b>Length:</b>        | 2 years  |
| <b>Class size:</b>    | Maximum 15 students                            |
| <b>Lessons:</b>       | 30 hours of classroom lessons Monday to Friday |
| <b>Lesson length:</b> | 55 minutes                                     |

\*this is a guide, not a minimum requirement

## Core elements

These core elements are compulsory components of the IB Diploma and are designed to help you learn and develop skills beyond the classroom.

|   |  |  |
|---|--|--|
| <b>Theory of Knowledge (TOK)</b><br>promotes intellectual curiosity through critical thinking | <b>4000-word Extended Essay (EE)</b><br>develops your research and academic writing skills | <b>Creativity, Activity, and Service (CAS)</b><br>stimulates personal growth through new experiences |
|---|--|--|

## Course structure and subjects

We offer a wide range of subjects at higher and standard level:

- **Standard level (150 teaching hours):** in-depth knowledge of the subject and an opportunity to develop key skills
- **Higher level (240 teaching hours):** a deeper understanding of key topics and concepts as well as the chance to enhance your skills

You need to select **3 at standard level (S)** and **3 at higher level (H)** from **6 subject groups**:



| Group  | Subject area   | Course options   | Level            |
|--|--|--|------------------|
| 1  | <b>Studies in Literature and Language</b><br>First language or native language | <b>Literature</b> - first language or native language: Albanian, Arabic, Bulgarian, Czech, Danish, Dutch, English, French, German, Greek, Italian, Japanese, Korean, Latvian, Lithuanian, Mandarin, Norwegian, Polish, Portuguese, Romanian, Russian, Serbian, Slovak, Spanish, Swedish, Turkish and Ukrainian | S                |
|  |  | English, German, Italian, Russian  | H                |
|  |  | <b>Language and Literature</b> - native or near native speaker of English, includes additional study of non-literary texts   | S or H           |
| <i>If you are fluent in more than one language, you can take two languages in Group 1. A bilingual diploma is awarded to any student who takes a language other than English in Group 1.</i> |  |  |                  |
| 2  | <b>Language Acquisition</b><br>Second language                                 | <b>English</b>   | S or H           |
|  |  | <b>If you study English in Group 1:</b><br>Mandarin, Spanish or German - beginner level<br>French, Mandarin, Spanish or German - intermediate level  | S only<br>S or H |
| 3  | <b>Individual and Societies</b>  | Business Management, History, Geography, Psychology<br>Economics, Global Politics  | S or H           |
| 3 or 4   | <b>Interdisciplinary</b>   | Environmental Systems and Societies  | S or H           |
| 4  | <b>Science</b>   | Biology, Chemistry, Physics  | S or H           |
| 5  | <b>Mathematics</b>   | Analysis and Approaches<br>Applications and Interpretation   | S or H<br>S or H |
| 6  | <b>Arts and Electives</b>  | Music, Theatre or Visual Arts  | S or H           |
|  |  | <b>Or 1 option below:</b><br>- another language from <b>Groups 1 or 2</b><br>- another subject from <b>Group 3</b><br>- another science from <b>Group 4</b>  |                  |





# LEADERSHIP PROGRAMME

St Clare's explicitly aims to develop students to be capable agents of change, to manage themselves effectively, to lead others, and to make a difference in their communities. All students at St Clare's are taught leadership skills explicitly within the curriculum and engage in a wide range of activities which develop different leadership skills. In addition, the College offers an **International Student Leadership Programme** to students in IB1.

The programme enables students to:

- Build and develop their leadership skills
- Deepen their understanding of a wide range of leadership styles and approaches
- Learn to recognise leadership in a variety of professional and community contexts
- Enhance their self-awareness
- Understand how to collaborate effectively with others
- Develop their creative and critical thinking skills
- Develop core skills for future study or employment opportunities
- Prepare to meet current and future opportunities and challenges

## Three principal elements

### Global Futures

is an introduction to the study of leadership skills and leadership research.

### Learn to Lead

develops leadership skills to a higher level through observation and practice; students attend a series of 'leadership in context' opportunities in order to observe leadership in action.

### The Leadership Project

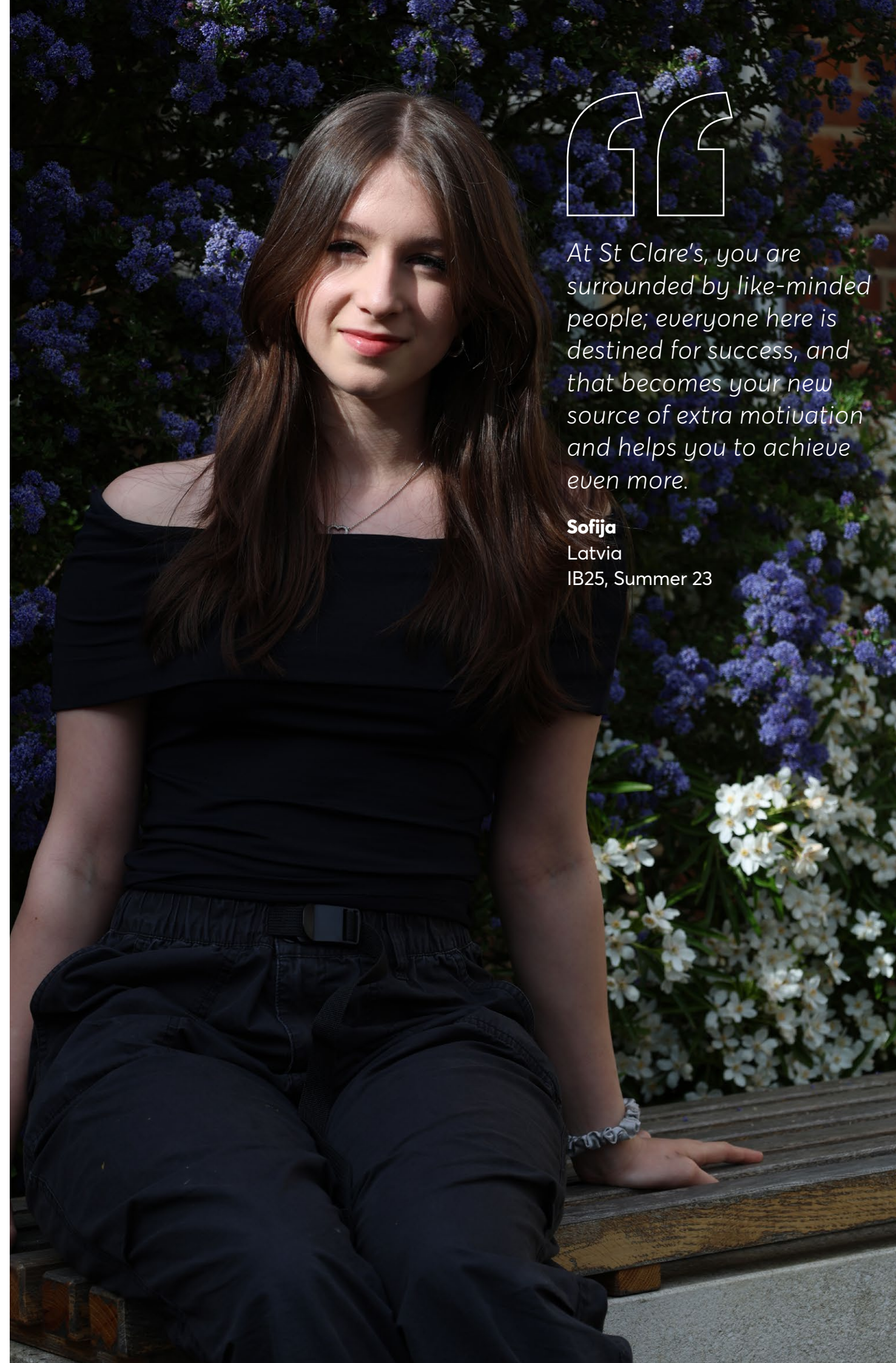
enables students to apply the skills they have learned in practice by working to meet needs within a community, and to reflect on what they have learned in the process and how successful their work has been in effecting change.



*At St Clare's, you are surrounded by like-minded people; everyone here is destined for success, and that becomes your new source of extra motivation and helps you to achieve even more.*

**Sofija**

Latvia  
IB25, Summer 23





# CREATIVITY, ACTIVITY, SERVICE (CAS)

Creativity, Activity, and Service (CAS) gives our students an opportunity to enhance their personal and interpersonal development by learning and engaging worthwhile and enjoyable experiences. Participation in the CAS programme encourages our students to develop their special talents while improving their fitness, awareness of others, and the ability to work cooperatively.

With over 50 Creativity, Activity, and Service (CAS) experiences a week, students can create a personalised CAS programme, which aligns with their interests or skills. The emphasis should be on creating a balanced programme of creative, active, and service opportunities.



## CREATIVITY

This aspect covers a wide range of arts & creative approaches. Creativity is the opportunity to achieve something new or take on a new creative challenge

- ART
- CHES
- CODING
- COOKING
- DOCUMENTARY CLUB
- ECONOMICS
- MATHS
- MEDICAL SOCIETY
- MODEL UNITED NATIONS
- MUSIC APPRECIATION SOCIETY
- MUSIC PRACTICE
- PHOTOGRAPHY
- PSYCHOLOGY
- ST CLARE'S UNION
- STUDIO ART
- THEATRE
- YOUNG ENTERPRISE

## ACTIVITY

This element encourages you to develop new skills & a sense of enjoyment from physical activity. It promotes a continued interest in health & wellbeing

- BADMINTON
- DANCE FITNESS
- FOOTBALL
- GOLF CLUB
- GYM-BASED BOXING
- GYM SESSIONS
- MIND & BODY BALANCE
- RUNNING
- SPIN CLASSES/STUDIO CYCLING
- SQUASH
- TABLE TENNIS
- TENNIS
- VOLLEYBALL
- WELLBEING WALK
- BASKETBALL
- HORSE RIDING

## SERVICE

Build links with individuals, the community or not-for-profit organisations. Work with diverse groups to engage, support & develop a sense of commitment to them.

- ANIMAL RIGHTS ACTION GROUP
- CLIMATE ACTION NOW
- DUKE OF EDINBURGH'S AWARD - BRONZE/GOLD
- ECO SCHOOLS
- HUMAN RIGHTS ACTION GROUP
- KNITTING FOR NEEDS
- LANGUAGE NETWORK
- TEACHERS & STUDENTS
- LOCAL ENVIRONMENT ACTION GROUP
- MUSIC NETWORK
- NURSERY ASSISTANTS GO DIGITAL
- PEER SUPPORT
- PETS & PLANTS
- POST PALS
- SHARE AND CARE
- STUDENT COUNCIL SCHOOL OFFICERS
- ST CLARE'S MAGAZINE
- TERRACYCLE GROUP
- TUTORING ASSISTANTS

**We offer over 50 experiences per week.**

This is a sample of our offering; the experiences may vary each term.



## The Duke of Edinburgh's Award

Undertaking Bronze and Gold Duke of Edinburgh Awards builds these aptitudes and personal characteristics:

- Generates resilience by accomplishing new challenges
- Develops orientation skills like map reading, cooking meals and route planning
- Builds friendships through teamwork activities
- Develops self-awareness through reflections on strengths and weaknesses
- Improves time-keeping and problem solving skills
- Builds confidence and enables personal growth

These skills are truly valued by employers and can be advantageous well into your future career.





# SPORT

We offer a variety of sport opportunities, that are also part of the CAS programme. Sports offered at a competitive team level include:

- Boys football
- Girls football
- Basketball
- Badminton
- Volleyball

We can also support you in joining local clubs for other sports, such as tennis, rugby, ice hockey, fencing, dance, rowing, and cricket.

We use specialised facilities across Oxford for much of our sport training:

- Oxford City Football Club
- Kirtlington Golf Club
- Ferry Leisure Centre
- Nuffield Health Fitness and Wellbeing Centre

All students are given membership to the Nuffield Health Fitness and Wellbeing Centre (included in fees), where students of all fitness levels have access to the state-of-the-art gym, a range of over 50 fitness classes, tennis courts and swimming pool.



# STUDY VISITS AND EXCURSIONS

Our study visits and excursions have an educational, cultural, environmental, sport or social focus, in the UK and beyond. Excursions have previously included:

## THEATRE & MUSIC

- London West End
- Royal Shakespeare Company
- Classical music choirs and concerts at Oxford University



## MUSEUMS & EXHIBITIONS

- Ashmolean Museum
- National History Museum
- Roman Baths
- National Gallery
- Bletchley Park



## ACTIVE & ADVENTURE

- Go Ape
- Wet n Wild
- Thorpe Park
- Paintballing
- Duke of Edinburgh expeditions



## LONDON

- London Eye
- Tower of London
- Covent Garden
- Buckingham Palace
- Camden Market
- Westfields
- River Thames boat trip
- Harrods



## LANDMARKS & ATTRACTIONS

- Stonehenge
- Cotswold Wildlife Park
- Blenheim Palace
- Cadbury's World
- Birmingham Christmas Market



## CITIES

- Brighton
- Bath
- York
- Bristol
- Stratford



## SPORT

- Oxford United FC matches
- Mediterranean Cup (football), Verona, Italy



## FIELD TRIPS & STUDY VISITS

- Wales (Biology & ESS)
- Barcelona
- Lisbon
- Northern Ireland (History & Politics)
- Milan



# BOARDING LIFE



## Boarding students

We offer a comfortable and safe boarding experience, with 20 residential boarding houses close to campus in North Oxford, and within walking distance of both Summertown and Oxford city centre. Our houses typically home 16-18 students, giving a family environment.

Our boarding houses feature secure single, twin and triple rooms, communal spaces such as common rooms and kitchens, and outdoor green spaces. Over half of our rooms have ensuite bathrooms. All houses have Wi-Fi available.

Each house has a House Parent, responsible for student welfare and support. Our dedicated team help students settle into life in the UK and work with them to make the living environment feel like home, including taking part in a fun and informative orientation weekend. Within their boarding house, students will have house activities, outings and opportunities to spend time together to create a 'home away from home'.

## Day students

We welcome local day students into our boarding community. They can join boarders for breakfast, lunch and dinner and socialise with friends until curfew. The costs of all meals are included in the fees.

## Food

Our bright, spacious dining hall provides a comfortable and relaxed space for students to eat and socialise. We provide breakfast, lunch and dinner every day, offering a wide range of delicious and nutritious meals, which promote a well-balanced diet. We cater for all dietary requirements.

Snacks and drinks are available all day at our café, The Globe at 135, and our boarding houses have small kitchens for students to make their own.

There are many cafes, restaurants and eateries of different cuisines within walking distance in Summertown, or in Oxford city centre.

**Guardianship:** All international boarding students must have an educational guardian in the UK. **The Boarding Schools Association (BSA)** and **Association for the Education and Guardianship of International Students (AEGIS)** websites have a list of guardians who have the BSA Certified Guardian certification which is an assurance of professional quality.



ff

*I have really nice roommates and friends from different parts of the world, and it has helped me to develop my knowledge about different countries, cultures and their values.*

**Tamerlan**  
Kazakhstan  
Pre-IB24 (now IB26)

# GLOBAL ALUMNI NETWORK



Become a lifelong member of our international alumni community

We provide a range of benefits to support our alumni on a personal, academic and professional level.

### Why join St Clare's Connect?

#### ADVANCE

- Advance career prospects by working with mentors, former St Clare's students who offer advice and guidance
- Access St Clare's careers support, for 3 years after leaving
- Develop your interests with access to our seminar series

#### NETWORK

- Expand your international network
- Attend Alumni reunion events and book personalised tours at St Clare's

#### PROMOTE

- Stay up-to-date with all our latest news and announcements, receive newsletters and hear about future events
- Promote yourself through your St Clare's Connect profile

### Help us by...

- Becoming a mentor to current and former students
- Creating an alumni profile
- Promoting our news and events

Join our alumni network:  
[www.stclaresconnect.com](http://www.stclaresconnect.com)





# HOW TO APPLY



The application process is simple and straightforward:

1. Please send us your school reports / academic transcripts for the last 2 years.
2. If these are satisfactory, we will ask you to complete and submit an online application form and registration fee.
3. We ask all applicants to sit our online Mathematics and English placement tests. These are used during the interview to discuss subject choices.
4. We will invite you and your family for a campus tour and you will attend an interview.  
  
If you are unable to visit us in Oxford, you can access the 360 virtual tour on our website and attend an online interview via Zoom.
5. If all goes well and you are successful, we will offer you a place straight after the interview and send written confirmation shortly afterwards.
6. The offer letter explains how to accept your place and an exciting new chapter in your life begins!

## Scholarships and Bursaries

We offer IB Diploma scholarships for students who contribute to our thriving learning community, academically and through experiences, achievements, and interests. We welcome scholarship applications from the UK and overseas.

Our day and boarding scholarships may be partial or full scholarship awards. All scholarships are financially means tested and are awarded for the full course.

### How do I apply for a scholarship and bursary?

Contact our admissions team and they will guide you through the applications process.



[admissions@stclares.ac.uk](mailto:admissions@stclares.ac.uk)  
+44 (0) 1865 552031



# IB INTRODUCTION

## SUMMER TASTER COURSE

|                       |                                |
|-----------------------|--------------------------------|
| <b>Age:</b>           | 15-17 years old                |
| <b>English Level:</b> | B2+                            |
| <b>Start dates:</b>   | June and July                  |
| <b>Length:</b>        | 3 weeks                        |
| <b>Class size:</b>    | Maximum 12 students            |
| <b>Lessons:</b>       | 25 lessons per week (23 hours) |



- Learn the IB philosophy and methodology, and attend introductory classes in English Literature, English Language, Maths, Arts, Humanities, Science and Theory of Knowledge (TOK)
- Benefit from the specialist knowledge of our International Baccalaureate teachers
- Be inspired by study visits, guest speakers and topical themes to take learning beyond the classroom
- Experience living in Oxford, choosing between college accommodation or homestay
- Enjoy our exciting varied programme of sports, activities and excursions
- Summer package price includes tuition, accommodation, full board meals, sports and activities programme, 1 excursion per week, insurance
- Strong pastoral care with 24-hour support

Accredited by the  
**BRITISH COUNCIL**  
for the teaching  
of English in the UK

This course is not endorsed by the IBO





# MORE COURSES

ST CLARE'S OXFORD

## INTERNATIONAL BACCALAUREATE

To advance international education and understanding

www.stclares.ac.uk

ST CLARE'S OXFORD

## INTERNATIONAL COLLEGE

For university, for career, for life

www.stclares.ac.uk

ST CLARE'S OXFORD

## SUMMER & SHORT COURSES

For Juniors, for Teenagers, for Adults

www.stclares.ac.uk

ST CLARE'S OXFORD

## TEACHER TRAINING

To advance professional development

www.stclares.ac.uk

Age 9 10 11 12 13 14 15 16 17 18 19+

International Baccalaureate

University Pathways & Gap Year Courses

English Language Courses

Summer: Juniors

Summer: Teenagers

Summer: Adults

Teacher Training

Follow us  
@StClaresOxford



139 Banbury Road, Oxford OX2 7AL, UK  
**T:** +44 (0) 1865 552031  
**E:** admissions@stclares.ac.uk  
**www.stclares.ac.uk**